

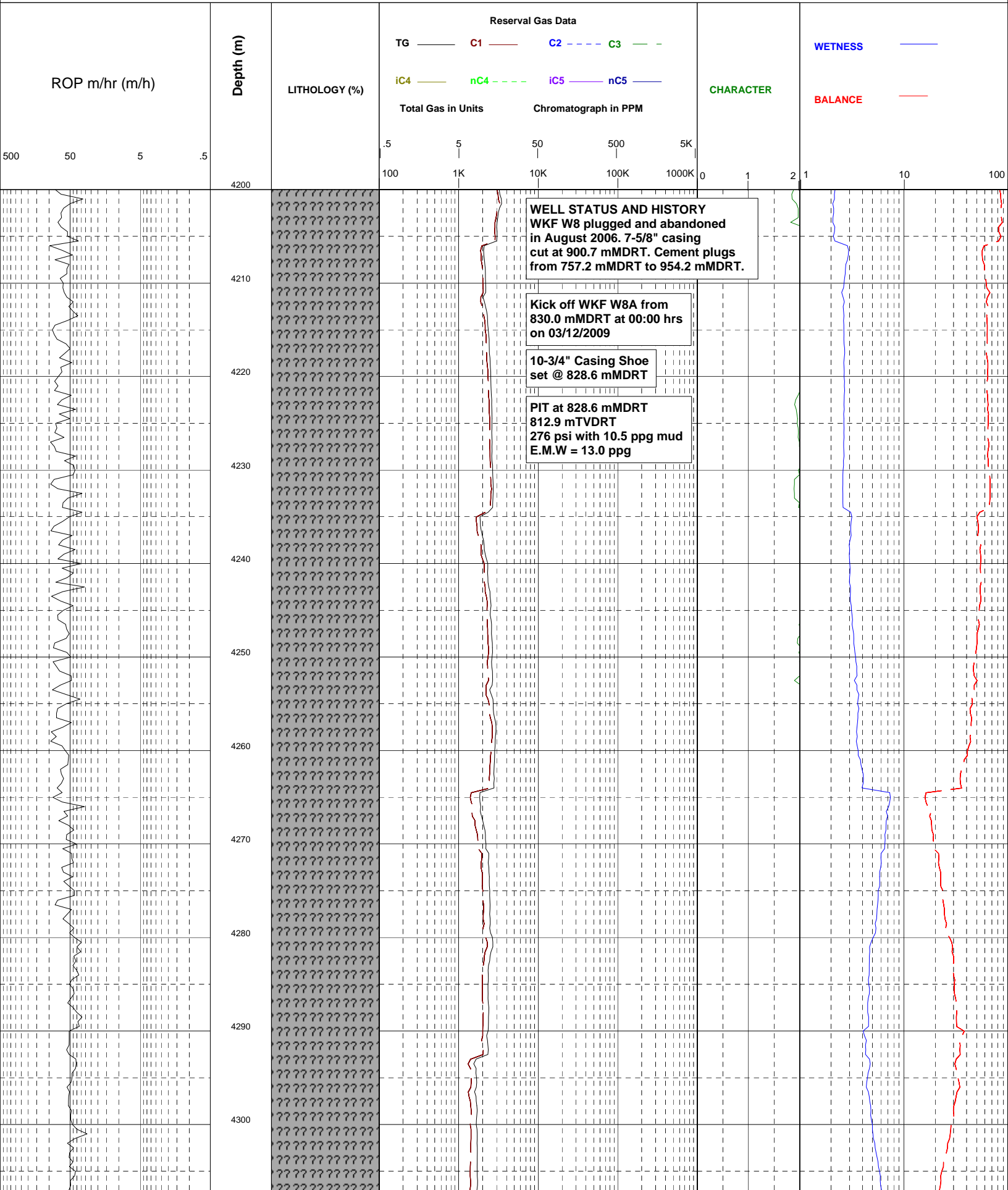


Reserval Gas Ratio Log



Well : WKF W8A

Scale : 1 : 500



WELL STATUS AND HISTORY
 WKF W8 plugged and abandoned
 in August 2006. 7-5/8" casing
 cut at 900.7 mMDRT. Cement plugs
 from 757.2 mMDRT to 954.2 mMDRT.

Kick off WKF W8A from
 830.0 mMDRT at 00:00 hrs
 on 03/12/2009

10-3/4" Casing Shoe
 set @ 828.6 mMDRT

PIT at 828.6 mMDRT
 812.9 mTVDRT
 276 psi with 10.5 ppg mud
 E.M.W = 13.0 ppg

